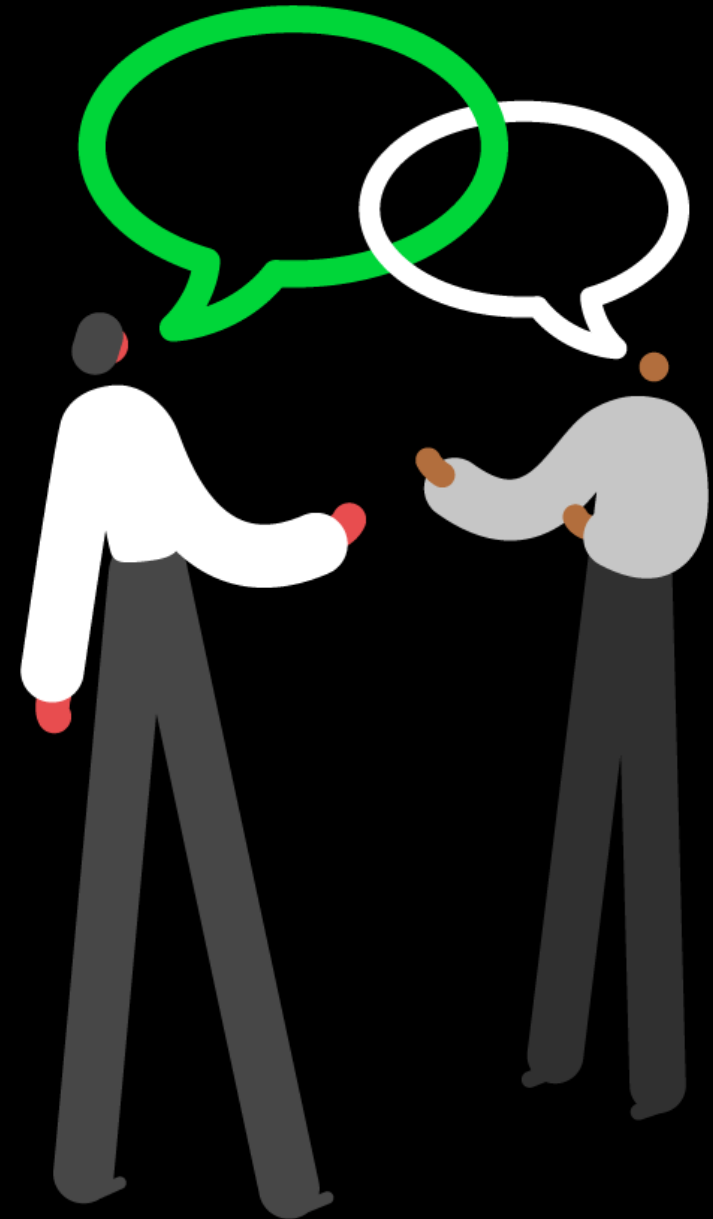


# Sage 200 2024 R2

## What's New

October 2024



# What's New Guide

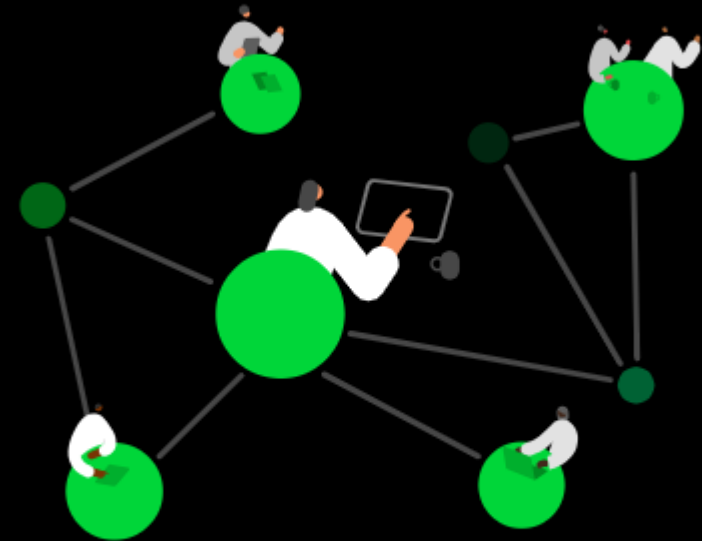
## Information on the new features for Sage 200 Professional, Standard and Sage for Education

Our progressive strategy is constantly evolving, and each new release is built using customer feedback; ensuring customers' needs drive our product [roadmap](#).

### **We're focused on a number of key aspects:**

- Simplifying your business processes and increasing efficiency,
- Modernising the software with greater flexibility of access to enhance productivity

# Introducing Sage Network



# Most of accounting and finance still runs on paper, emails, PDFs and painful manual processes

Vendor's AR (Accounts Receivable)

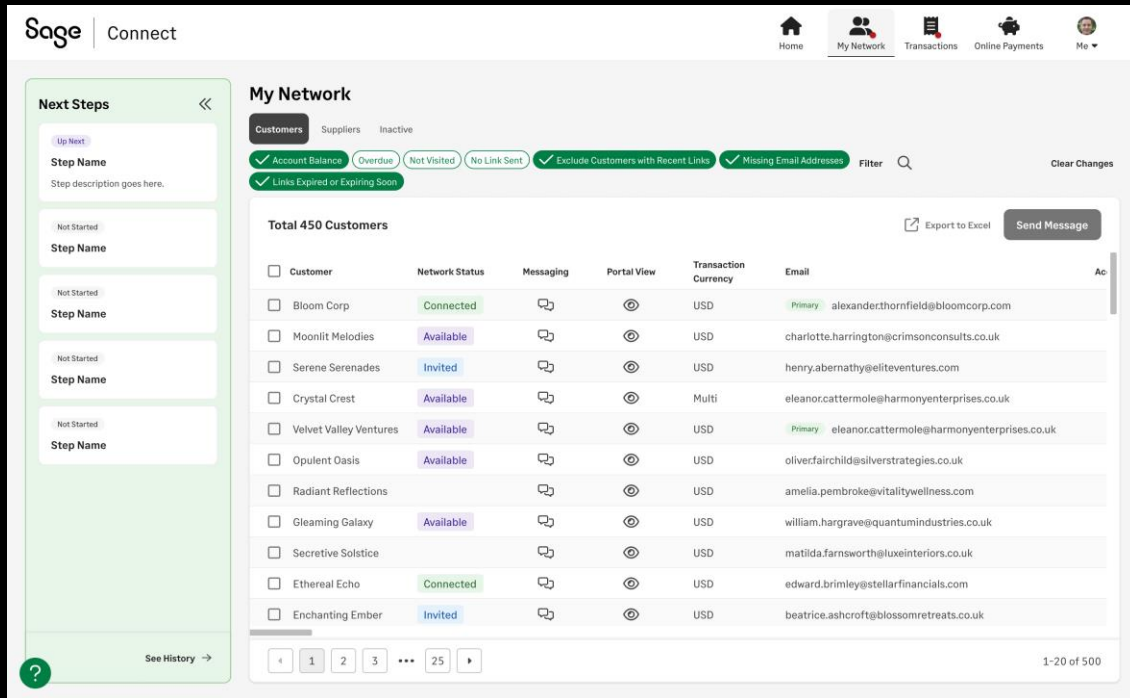
Customer's AP (Accounts Payable)



Invoices | Statements | Credit Notes | Account Balances | Contact Information | Payment Terms |

# AR Automation For Sage 200

Make Getting Paid From Repeat Invoices Simple and Painless



1

## Get Paid Faster With Less Effort

Avoid payment delays with automated customer onboarding and verification, ensuring invoices are accurate from the start.

2

## Stay on Top of Cash Flow

Identify customers affecting your cash flow with a 24/7 view of all outstanding invoices, amounts due, and payment status.

3

## Simplify and Automate Collections

Schedule, send, and track payment reminders and invoicing communications, to avoid manual follow-ups and digging through emails for past communications.

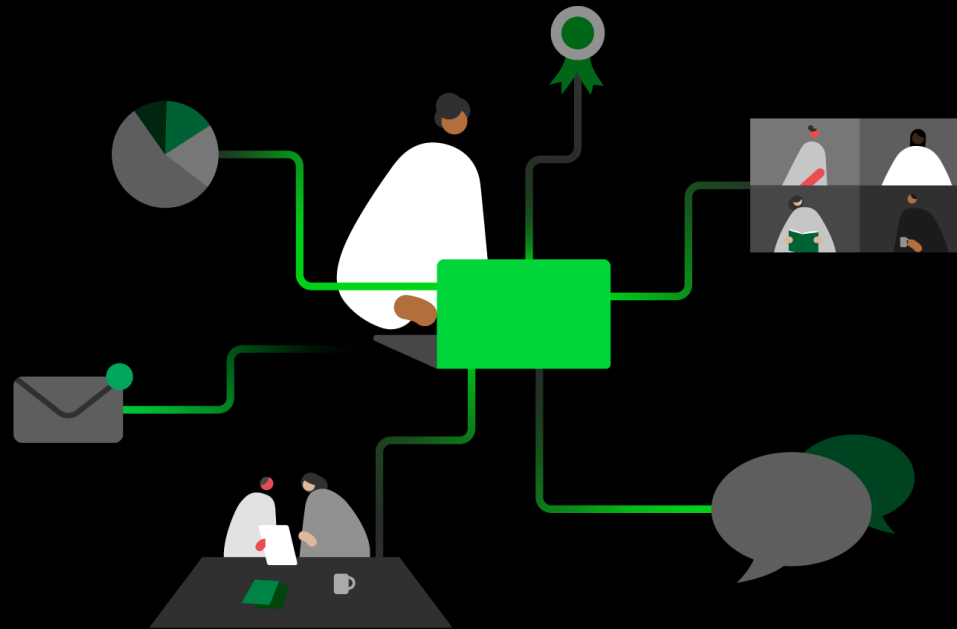
4

## Start Quickly Without Long, Complex, or Costly Implementations:

Get set up using a standardised ERP connector that seamlessly integrates with your accounting system.

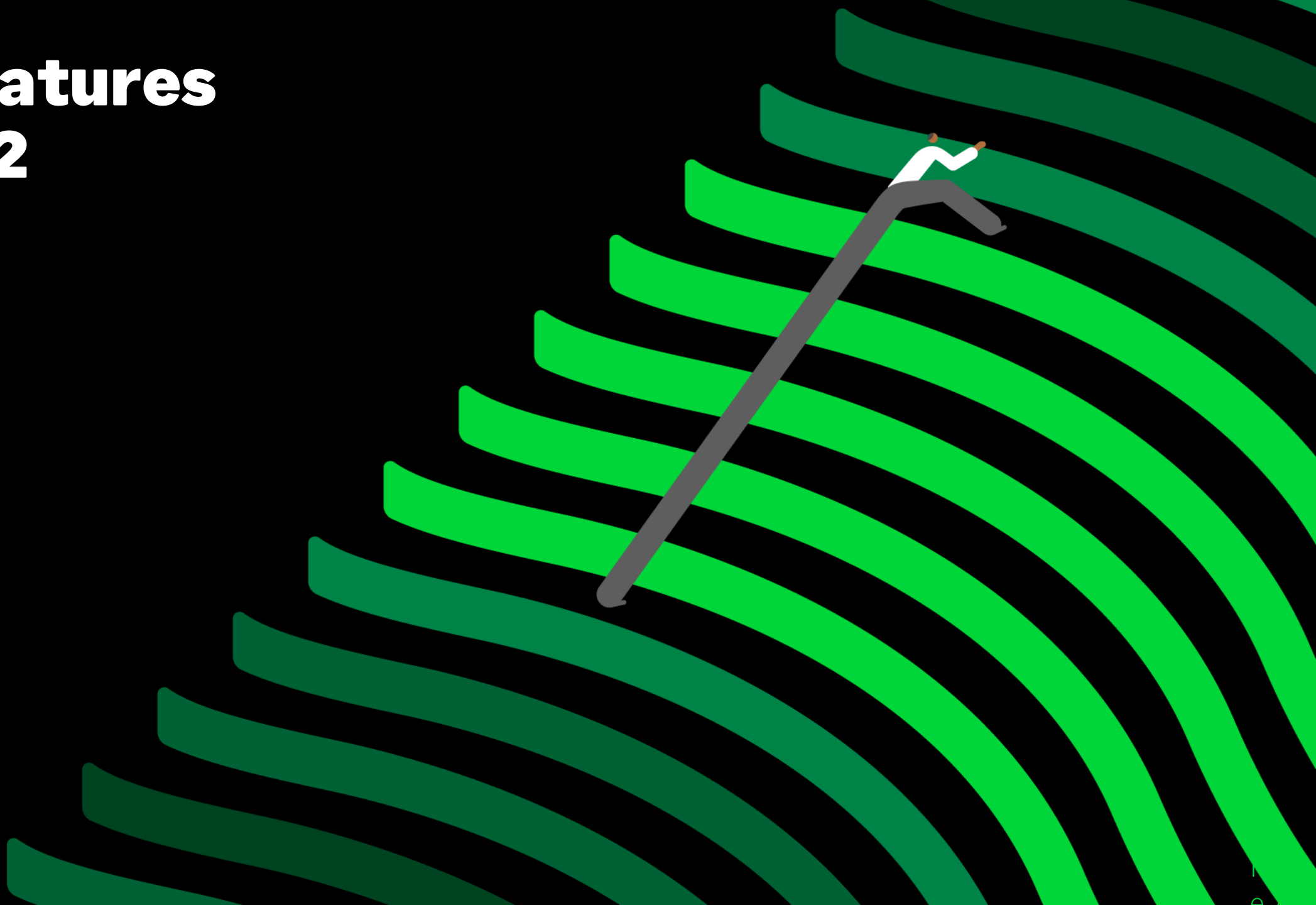
# AR Automation For Sage 200

Join our Sage 200  
Professional and Sage  
Connect Early Adopter  
Program for Customers



Customers can sign up for **exclusive early access** here!

# New Features 2024 R2



# You Said, We Listened

Our customers have requested the following features...



## Amend Requested and Promised Dates

Enhance efficiency and accuracy with the ability to modify requested and promised dates on Sales Orders, Quotes, (desktop and web Screens), and Proformas (desktop only). Instead of manually updating each line item, our new feature allows for quick, cascading date changes, significantly reducing data entry time.



## Increased Reference and Second Reference Field Lengths

Originally driven by the need to accommodate longer vendor invoice numbers, such as those from Amazon, this enhancement ensures businesses can avoid abbreviating critical information, reducing errors and improving data clarity.

If there's something you'd like to see in Sage 200, tell us about it on the [Sage 200 UKI Ideas Portal](#).

Sage



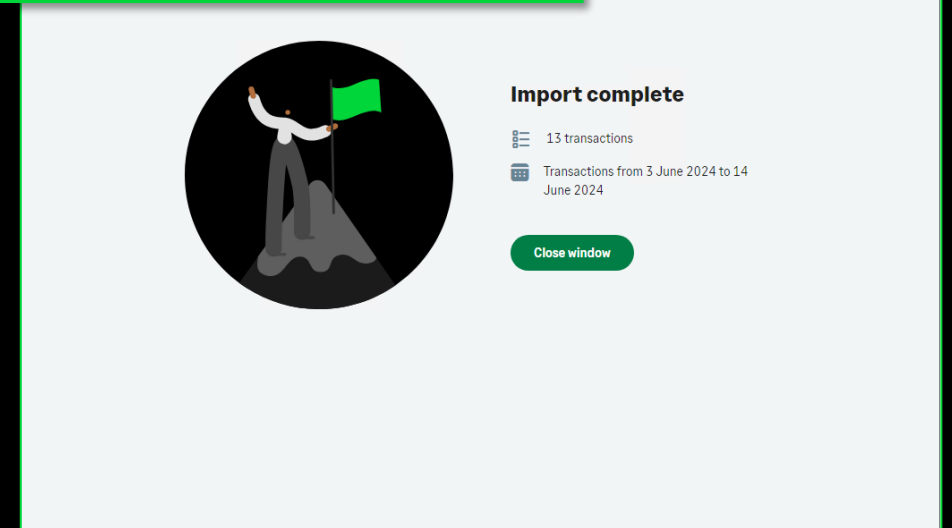
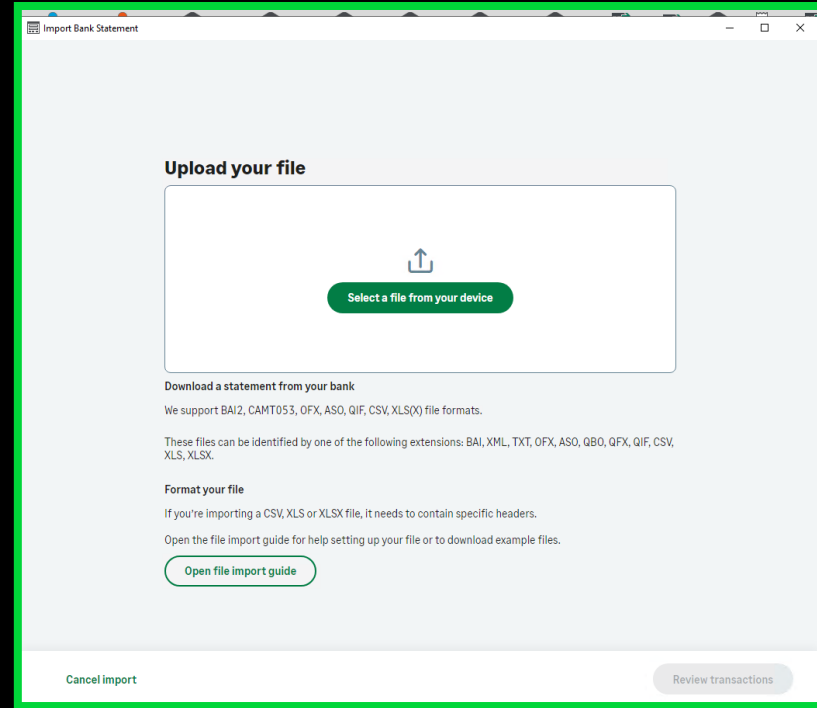


# Bank Feeds

## Transaction Import

Customers can import bank transactions for reconciliation purposes.

This new feature ensures that all transactions are entered accurately and on time, giving businesses better control over cash flow, financial position, and security by identifying any discrepancies quickly.



# Updates



## **Scalable Model Architecture for Sage 200**

Sage 200's model architecture is designed to provide your business with a flexible, scalable, and high-performance framework that adapts to your evolving needs

*Variants: Professional*



## **Celebrate business growth with greater business management**

Whether you need greater functionality, are looking for a true cloud-native solution, or have a greater choice of integrated applications, Sage 200 is the next step for a successful and growing business. To support your move to Sage 200 Standard, we've created a simple migration that is secure, quick, and easy to move your data from Sage 50.



## **Make sure everything runs smoothly**

By identifying and addressing issues early, we provide a more reliable and stable product experience, minimising downtime and costly disruptions



## **Changes to URLs for Opayo (formerly Sagepay)**

*Variants: Standard & Education*

# Further Updates



## **SPC Azure Image**

Deploying onto the latest images unlocks a wider number of benefits including keeping up to date with Microsoft product lifecycle.

*Variants: SPC*



## **Streamlined Bank Feeds Onboarding with Modern Authentication**

A technical upgrade to align Sage 200's bank feeds onboarding journey with the modern authentication method already in use for Invoice Payments. This change modernises your experience and ensures continued functionality without disruption.



## **Stay protected with our security updates**

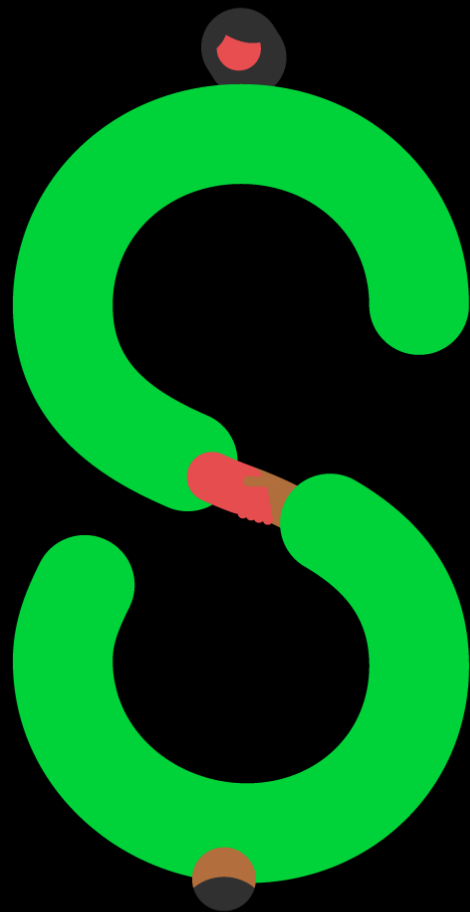
By staying up to date with our security enhancements, you can confidently operate knowing your Sage 200 environment is secure and resilient against emerging threats



## **Barclays Corporate Bank Feeds**

As voted by our customers, the Barclays Corporate Bank Feeds feature for versions 2021 R1 and above, specifically where mobile authentication is in use.

As part of this release, we'll be making some changes to some services we offer and retiring others. We'll be retiring the Sage 200 Standard – Opening Balance Migration Tool and the Contact App.



Sage

**Thank you!**

© 2024 The Sage Group plc or its licensors. All rights reserved. Sage, Sage logos, and Sage product and service names mentioned herein are the trademarks of Sage Global Services Limited or its licensors. All other trademarks are the property of their respective owners.